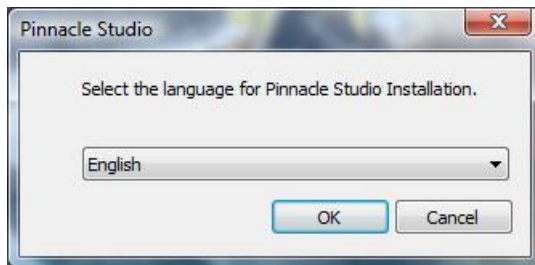


Installation Instructions for Pinnacle Studio 16

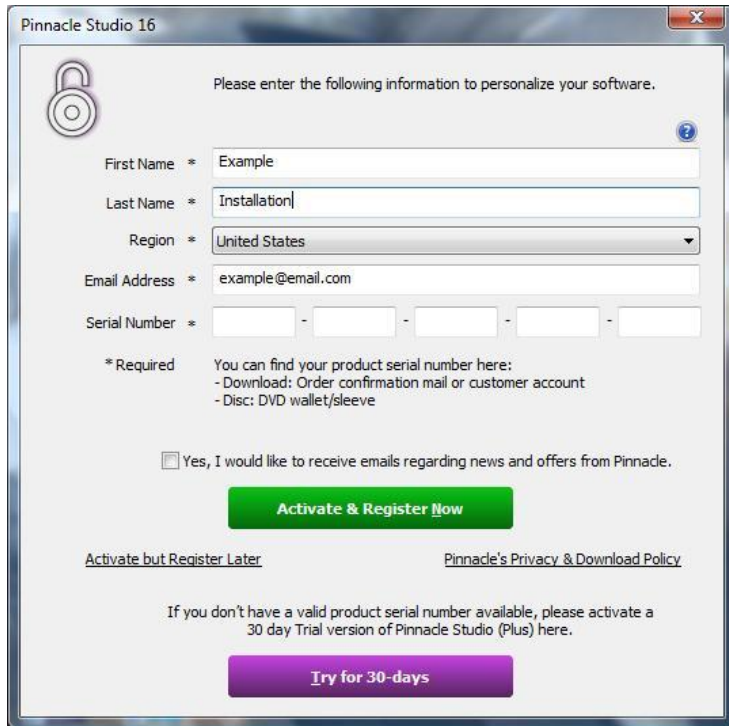
1. If you are installing from disc, you will see this window when you insert the disc. Click Run Welcome.exe.



2. After starting the disc or download installation, you will be prompted to select the install language. Select the language and click OK.



3. Next, enter your name, email, and serial number. Then click "Activate & Register Now".



Pinnacle Studio 16

Please enter the following information to personalize your software.

First Name * Example

Last Name * Installation

Region * United States

Email Address * example@email.com

Serial Number * - - - - -

* Required You can find your product serial number here:
- Download: Order confirmation mail or customer account
- Disc: DVD wallet/sleeve

Yes, I would like to receive emails regarding news and offers from Pinnacle.

Activate & Register Now

[Activate but Register Later](#) [Pinnacle's Privacy & Download Policy](#)

If you don't have a valid product serial number available, please activate a 30 day Trial version of Pinnacle Studio (Plus) here.

Try for 30-days

4. After registering you will receive a window that thanks you for registering and gives you the option to sign up for a Box.com account, click OK.



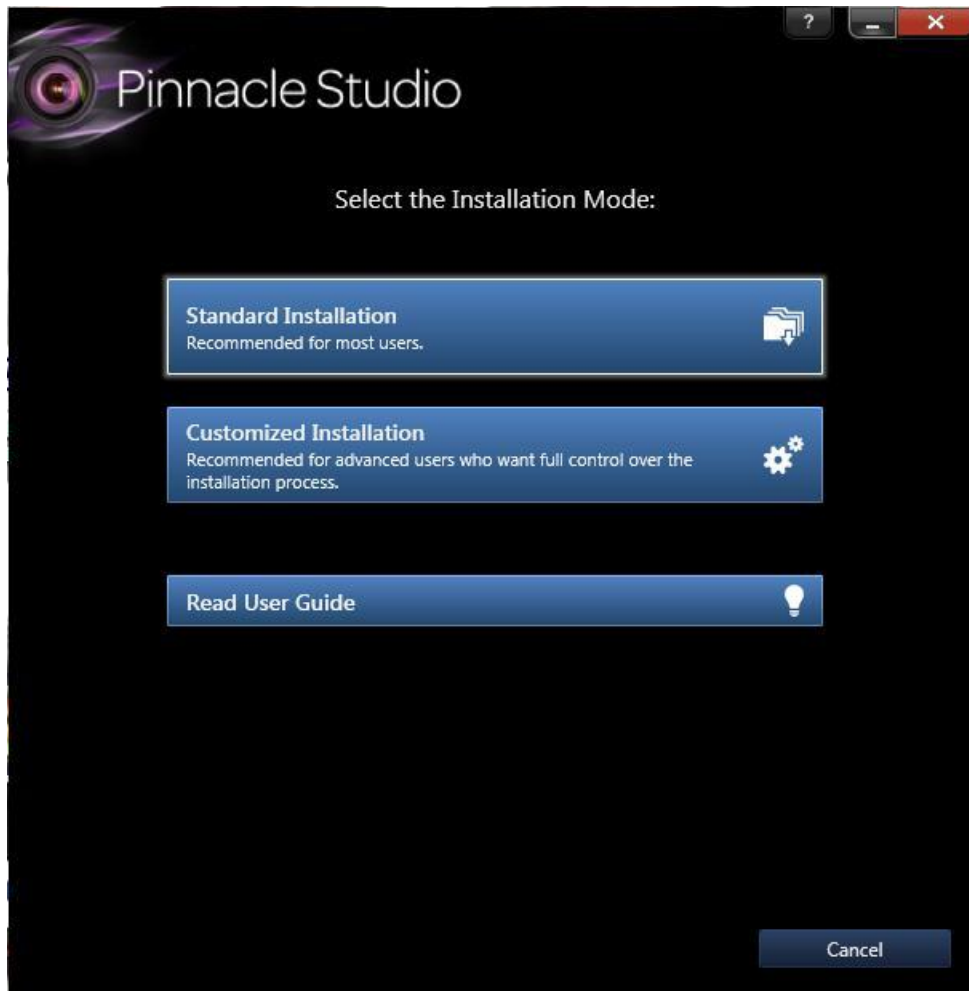
Pinnacle Studio 16

Thank you for registering!

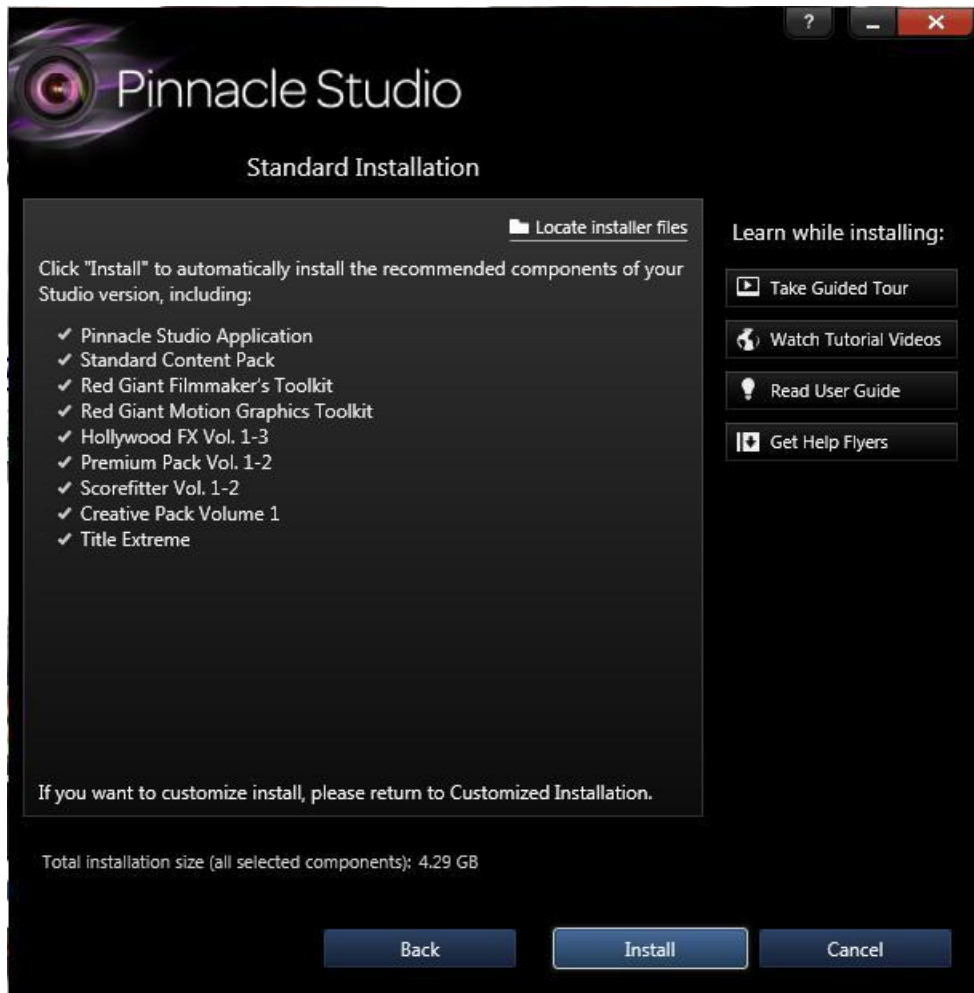
1. You are now eligible for full product support.
2. You can now login to Box from within Studio with the same e-mail address used for registration in order to receive a total of 50 GB storage space for free.
Learn more about Box at www.box.com
You will receive an e-mail with your detailed registration information.

OK

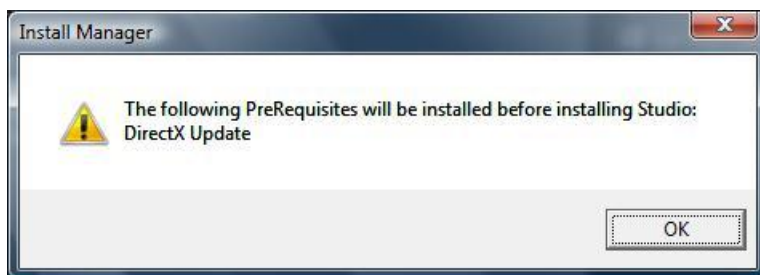
5. Next, you will be presented with an option to use the Standard or Custom Installation. For most users we recommend using the Standard Installation. This will install all of the included content.



6. This is the Standard Installation screen, click Install to continue.

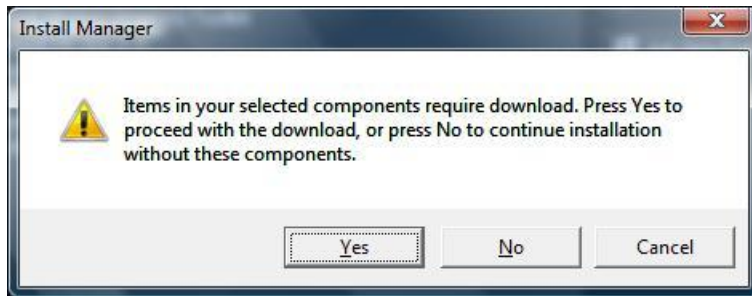


7. Certain Prerequisites are required for installation. Click OK to continue.



If you are installing from a disk, skip to Step 12. If you are installing from a download, proceed to Step 8.

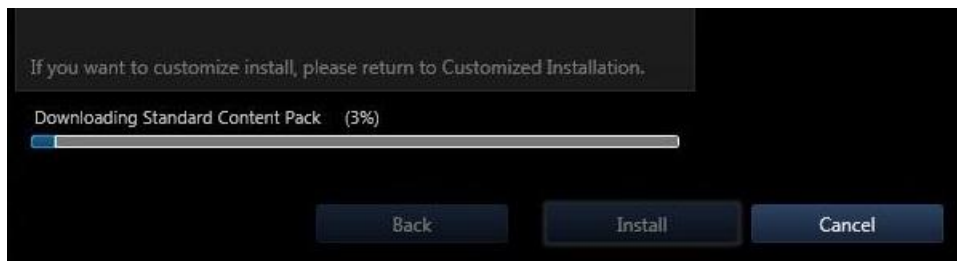
8. If you have a download version of Studio, you will be prompted to install the selected components. Click Yes to continue.



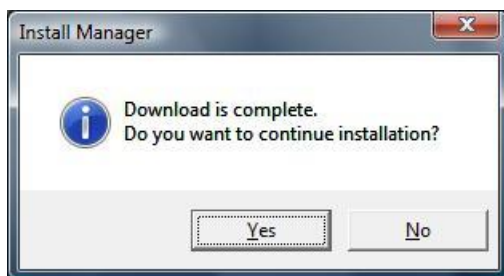
9. Next you must install the Pando Media Booster software to proceed with the download. Click OK.



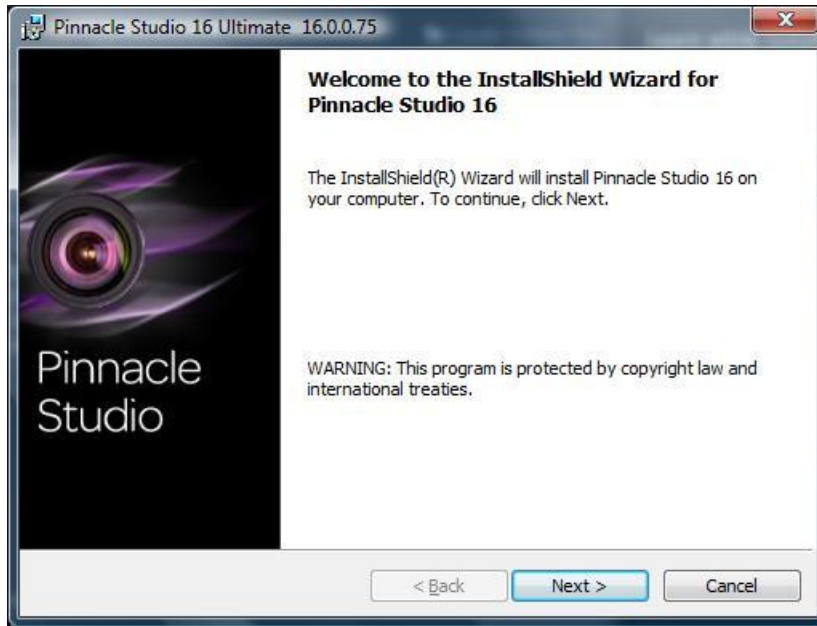
10. The content download status will be updated at the bottom of the Welcome screen.



11. Once the content is downloaded you must click Yes to continue with the installation.



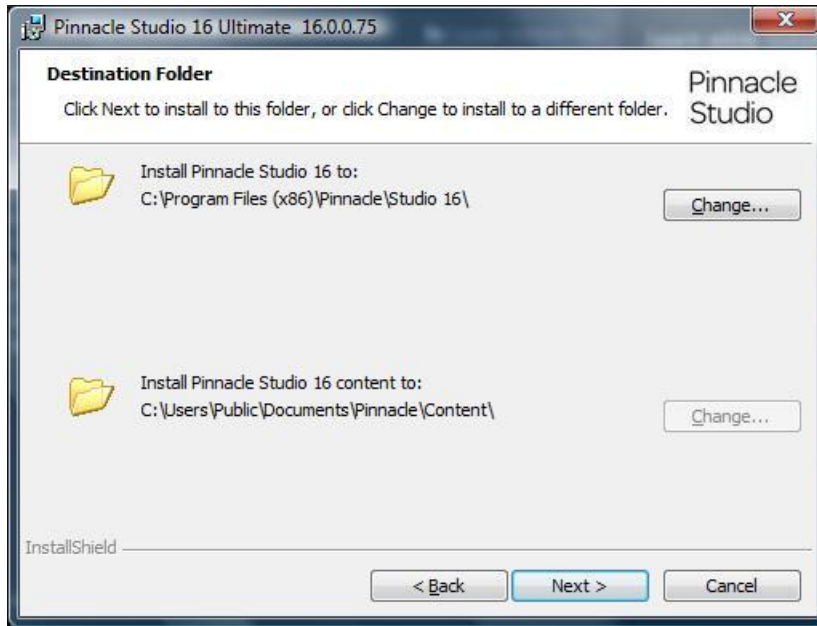
12. To begin the installation, click Next on this first install screen.



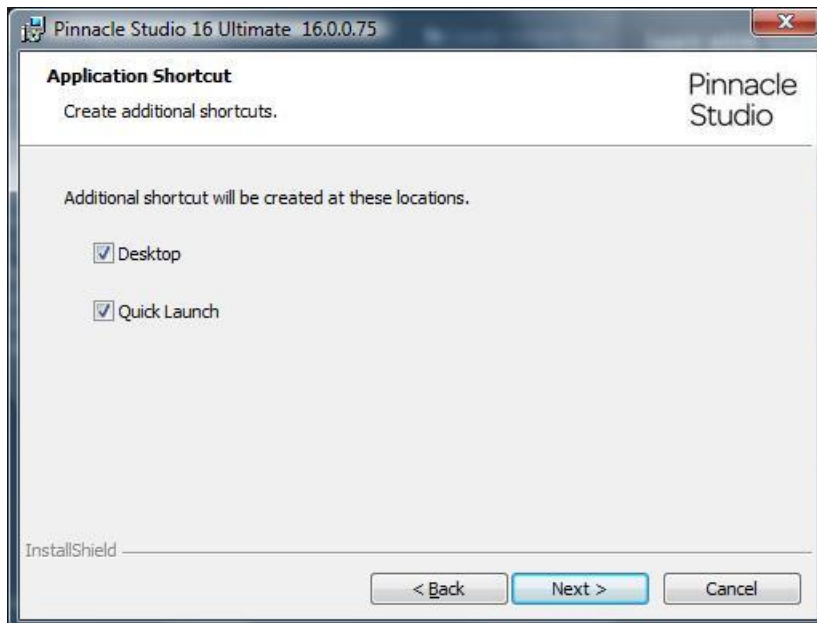
13. Read the license agreement, if you accept them select "I accept the terms in the license agreement, click Next.



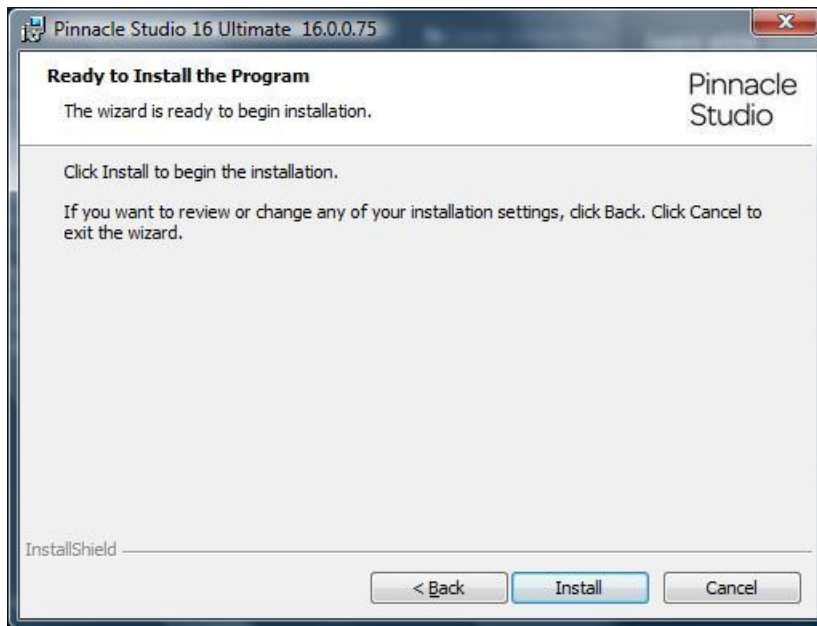
14. This screen allows you to change the location of the Studio 16 installation (optional). Click Next.



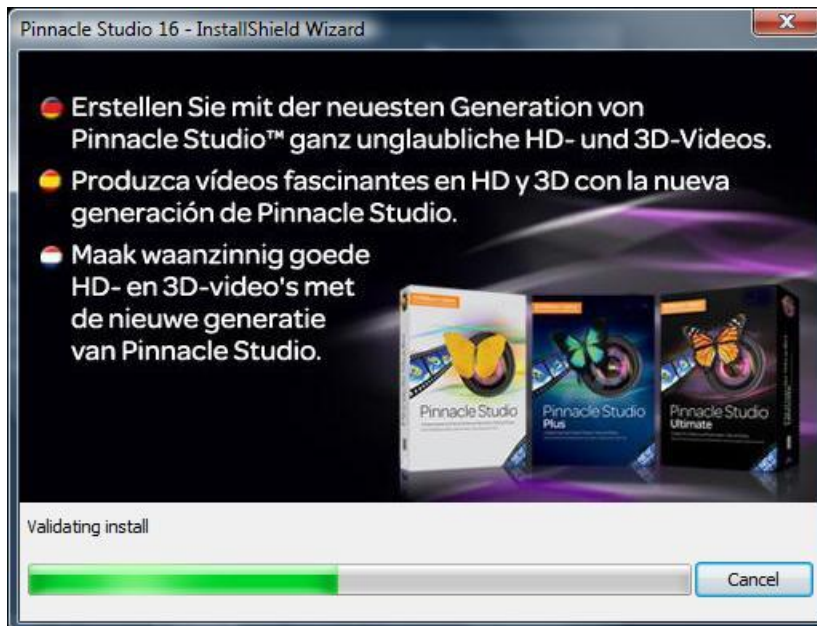
15. Next you are given the option to add Desktop and Quick Launch shortcuts. Make your selections and click Next.



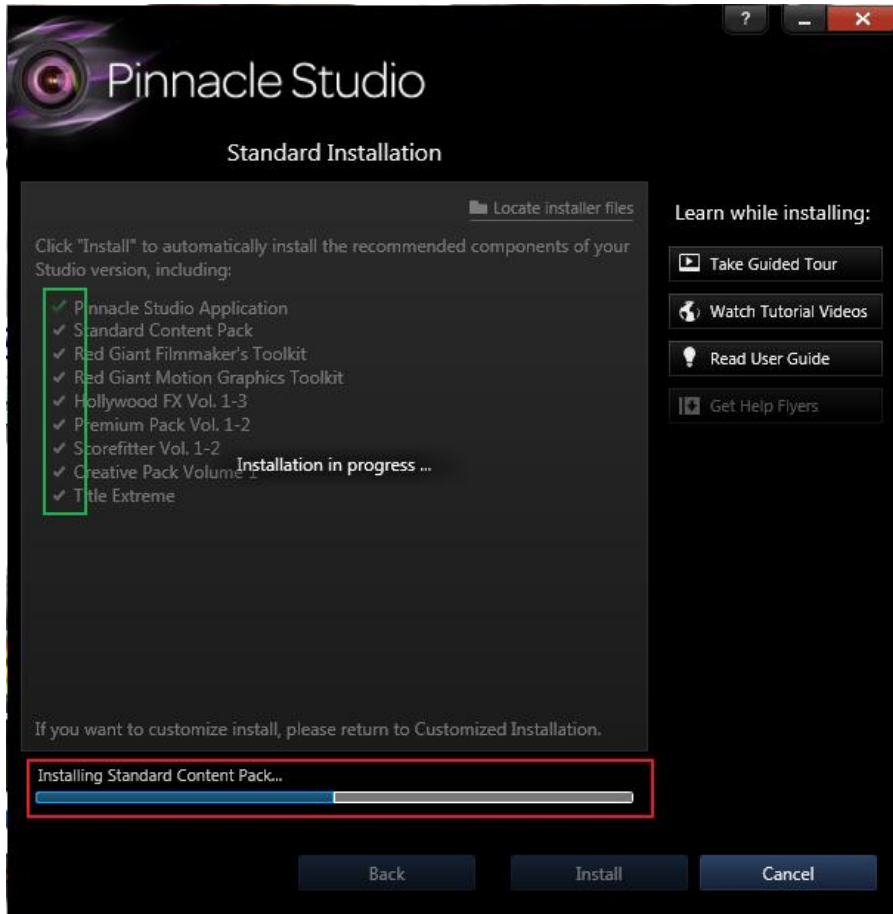
16. This screen gives you the option to continue with the install or go back and make changes. If you want to proceed, click Install.



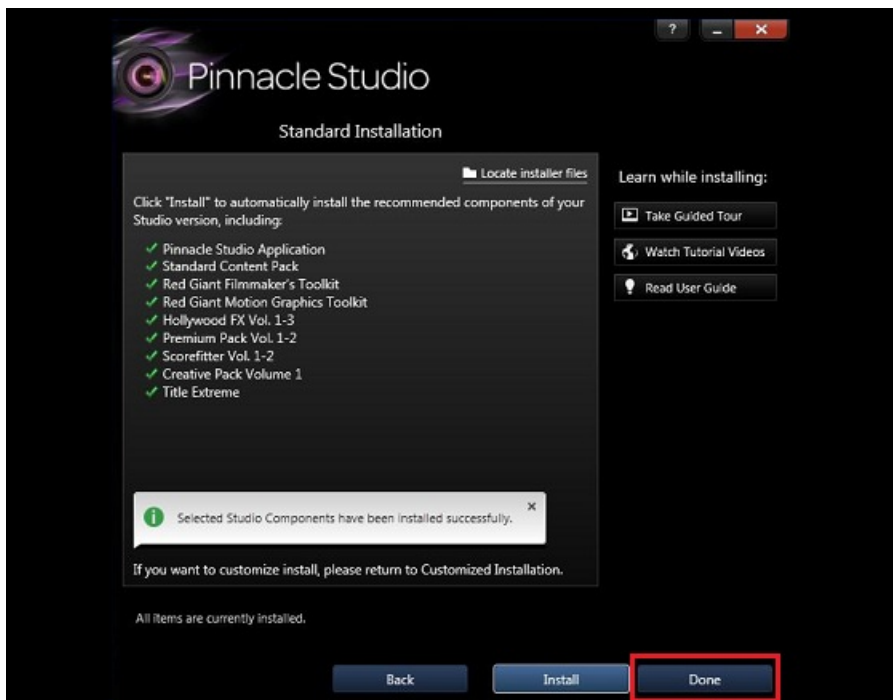
17. The Studio installation begins. This process will take some time.



18. After the main Studio application is installed, the content will be installed. You can identify what has been installed already by checking the check marks next to the content. It will be green if it is installed. The bottom of the installer shows the current item that it being installed.



19. Once the installation is complete, click Done to exit the installer.



Congratulations, Pinnacle Studio 16 is successfully installed!