

Studio 15 Quick Start

This quick start guide explains the most important areas of Pinnacle Studio 15 to help you make your first film - from loading the videos, music and images to uploading to the Internet or outputting to DVD or another medium. If you need further information about a specific subject, open the help menu in Studio 15. There you will find the complete manual.

1 Import: video, audio and images

Close all devices and storage media that contain video, audio or images: for example, **DV cameras, USB sticks, SD cards, digital cameras, converter boxes** (e.g. Pinnacle 510 USB) - everything that your computer recognizes. Start Pinnacle Studio 15. Click on the first editing step, Import.

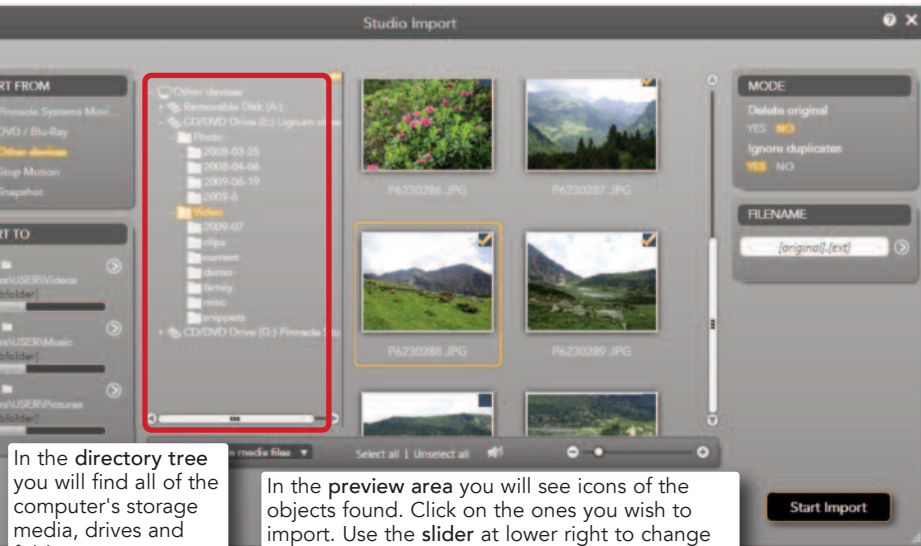
Then in the **IMPORT FROM** section, select a device, DVD/Blu-Ray or Other Devices, for the storage media.

In the **IMPORT TO** section, you will see the current folder for video, audio and photos. Click on the folder symbol to change folders. The gray bars show how much storage space is available.

C:\Users\USER\Videos
[set subfolder]



www.pinnaclesys.com



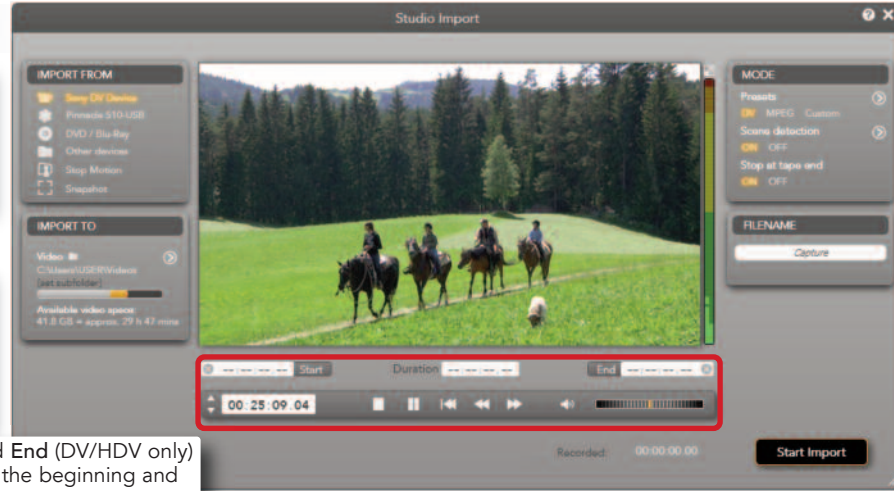
In the directory tree you will find all of the computer's storage media, drives and folders. Click on a folder to show its contents.

In the **preview area** you will see icons of the objects found. Click on the ones you wish to import. Use the slider at lower right to change the icon's size. Click to play video and audio; use the **loudspeaker** icon to change the volume.

Capture from a DV or HDV camera:
Connect the device to the computer; it must be displayed in the **IMPORT FROM** section and must be active (clicked on). Make sure there is enough video storage space!

Capture from an analog camera:
To do this, there must be a connection box available (for example, a Pinnacle 510 USB) with available analog connections. The control keys cannot be used for analog capture. You must control the device directly.

Capture with **Start** and **End** (DV/HDV only) - here you can specify the beginning and end of a clip exactly.



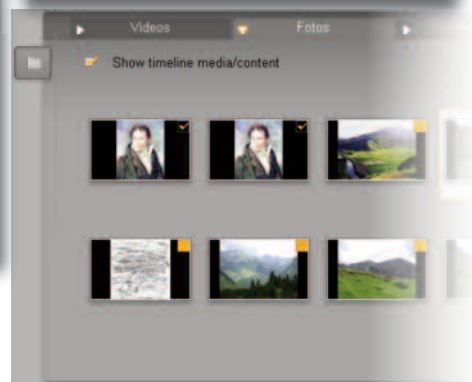
Video formats - select DV/HDV, MPEG2 or specify the format yourself. The **Automatic scene detection** takes over the division of the video into individual scenes (clips).

Capture easily with Start/Stop: The first click starts the tape and the capture; the second click stops it. All of the clips are transferred into the **Album**.

Organizing projects with the project bin

The **Project Bin** is a container where you can collect the objects for your project: videos, photos, titles, etc. Right-click on an object (clip) and select **Add to Project Bin** - you can open it via **Menu bar > Toolbox > Show Project Bin**. In the **Project Bin** you can also display all of the objects that you have already used in your film. This prevents duplicates.

The display is arranged into these sections: **Videos, Photos, Audio and Other**.



Show timeline media/content

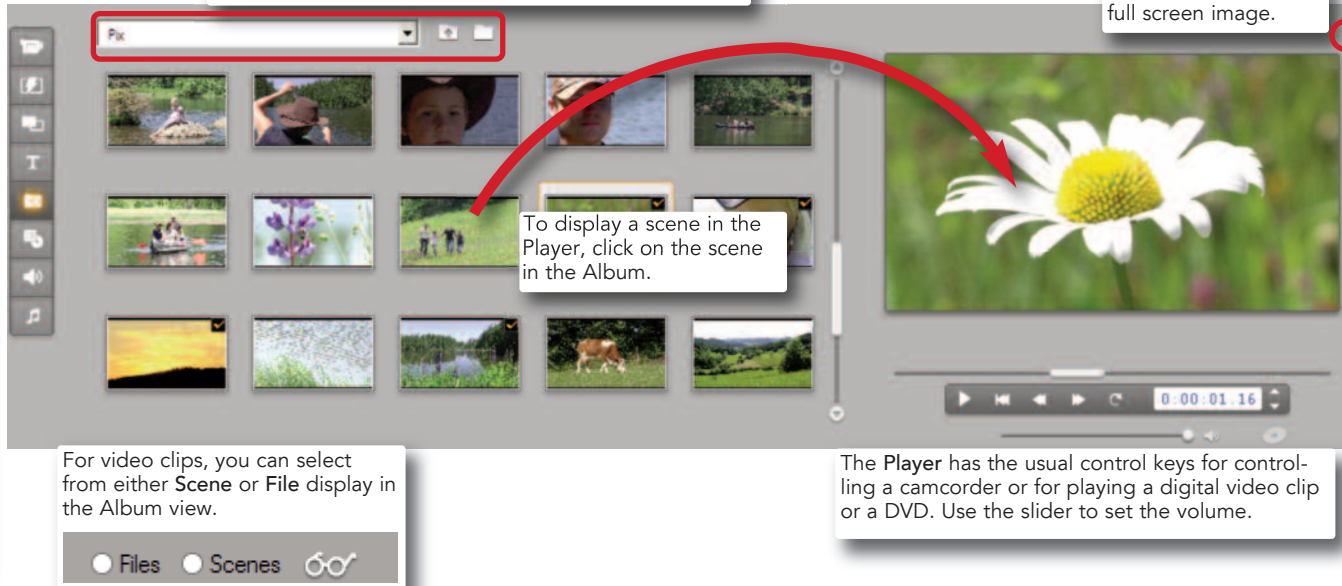
2 Album: everything has its place

Everything you need to make a film or slide show is filed in the various sections of the Album. Sorting takes place here as well as production (e.g. title). Sorting takes place here as well as production (e.g. title). Click on **Edit** to display the Album. The icons at left open the Album sections, e.g. the photo page.

Other functions:
Scene detection based on clips: Right-click on a clip and select one of the detection modes.

Access files directly:
The **Open Containing Folder** command in the context menu (right-click) opens Windows Explorer to access the file.

In the drop down list you will see the currently selected folder - **My Videos** or **My Photos** is the default. Next to it are the functions for changing Windows folders and opening others.



For video clips, you can select from either **Scene** or **File** display in the Album view.

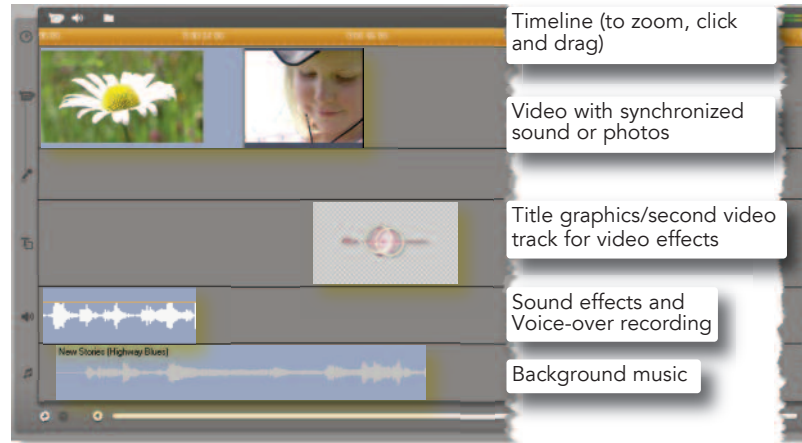
To display a scene in the Player, click on the scene in the Album.

Click here to switch to full screen image.

The **Player** has the usual control keys for controlling a camcorder or for playing a digital video clip or a DVD. Use the slider to set the volume.

3 Editing: The Movie Window

In the **Movie Window**, objects that you have collected in the **Album** or the **Project Bin** are used to create the film. Simply drag the objects (scenes, music, photos...) into the right tracks.



Timeline (to zoom, click and drag)

Video with synchronized sound or photos

Title graphics/second video track for video effects

Sound effects and Voice-over recording

Background music

You can't do anything wrong here: all of the objects can only be placed where they belong. To insert a clip between two others, just drag it to a position between the two clips. To **delete**: click on it and press **Del** on the keyboard.

Other Movie Window views:
Storyboard / Timeline / Text

Editing functions:
Add Marker
Audio scrubbing
Split clip (razorblade)
Delete clip

Audio Preview
Peak Meter

The slider displays the current position on the timeline.

The green lines indicate that you can insert.

2 Edit

Working with Montage themes and SmartMovie

Montage themes are elaborate templates for slide shows and animation to which you can add videos and photos. With **SmartMovie** you can quickly and easily create your own music videos with special effects.

1 Select **Montage**.

2 Select a Montage theme and drag it into the Movie Window.

3 Drag clips into the target window.

4 The result is displayed in the Player.

5

1 Select (from the menu bar) Toolbox > **SmartMovie**.

2 Choose a Music style.

3 Type in the Opening title and Closing credits...

4 ... and follow the instructions...

... until you have finished your **SmartMovie**!

2 Edit

4 Editing: effects

Picture effects are to film what salt is to soup: the soup has to be salted, but the quality depends on how much. Pinnacle Studio has Transition effects (these always involve two consecutive clips: for example, a blended image) and Video effects, which are used with individual clips (for example, a color filter) as well as overlays (Overlay effects), for example, picture-in-picture effects.

1 In the Album, select **Transition effects**. You will find further effect categories, e.g. Alpha Wipes, in the drop down list.

2 Select an effect and drag it to the beginning of the clip. Simply click on Effect icons for a preview in the Player.

To remove the effect: click on it and press the Del key.

4 Select a category...

3 Select **Video effects**.

5 Click OK and edit the effect parameters if you wish.

2 Open the **Video Toolbox**.

1 Highlight the clip.

The green timeline means that the effect is being rendered.

6 Exit the Video Toolbox.

How to create a video effect

2

1

A chroma key effect is an example of an **Overlay effect**. Open the Video Toolbox, then the Video overlay section.

The boy recorded in front of the Green box is placed in front of the sunset background. Picture-in-picture effects are created in a similar way.

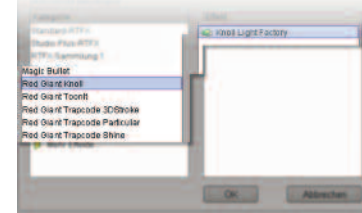
The Overlay track is automatically added when you place a video clip on the Title/Overlay track.

Extra FX: Studio Ultimate/Ultimate Collection

If you own **Pinnacle Studio 15 Ultimate** or the **Ultimate Collection** version you have a set of high quality plug-in effects.

These effects can be found in the Video Toolbox under Video effects. The Red Giant effects can be edited directly in Studio. Magic Bullets Looks opens an external program window. Use Cancel or OK to return to Studio.

If you purchase plug-in effects later, you will also find them in the Video Toolbox under Video effects.



3 Make Movie

5 Output: DVD, web upload, tape, file export

When your production is finished and it is all on the timeline, it can be output as a film or an audio-visual presentation on DVD, as a file, on a video tape or directly to the Internet as an Upload. Click on Step 3, Make Movie to call up the output options. To output to the web:

Select Web, then YouTube or Yahoo!Video (if you have not yet registered at these portals, you can do it now).

Here you will see the storage capacity requirement for the local and/or temporary files.

Then click on Create. In the next dialog you can enter key words that describe your film.

When outputting to DVD a display of the available storage space is shown along with the Settings button to adjust the quality of the output.

You can check the upload immediately by clicking this icon. The standard web browser opens.

3 Make Movie

6 Still more Studio functions

When exporting into one of many file formats (e.g. DivX, FlashVideo, Windows Media) you can simultaneously open a Player (Windows Media Player or QuickTime Player).

To record to tape, connect a suitable camcorder or similar device.

File Type: Video
Preset: Small 15.9
Create between markers: [beginning] [end]
Writing frame 104 of 416 frames

Title editor - a high performance tool for creating static or moving titles. Includes a variety of templates for any occasion or purpose.

DVD editor for disc menus - create interactive DVDs with menus you design yourself. Templates make it easy to get started.

Audio - a virtual mixing console for precise audio track editing. Create films with surround sound!

© 2011 Avid Technology, Inc. / Rev. 01 October 2010

www.pinnaclesys.com