

# Configuring MCE for PCTV To Go IR control when used with a set-top box TV source and when you have an MCE IR Emitter/Receiver

## OVERVIEW:

You can control your PCTV To Go connected Cable or Satellite set top box through the Windows Media Center User Interface (MCE) as long as:

- ✓ You have correctly configured the IR Blaster on your using the PCTV Wizard.
- ✓ You have attached an MCE IR Emitter/Receiver (also known as a “Bean Bag”) to the USB port of your PC. Note: An MCE IR Emitter/Receiver is not supplied with PCTV To Go, but can be purchased from a variety of suppliers. Just make sure that the device you purchase is certified for use with MCE. If your MCE PC came with a built-in tuner, you most likely got an MCE IR Emitter/Receiver in your package.
- ✓ You have correctly configured your MCE system for the Cable or Satellite set top box connection and downloaded the proper program guide corresponding to your Cable or Satellite service provider.

Once you have correctly configured your MCE system, any channel change commands which you issue through the MCE system are captured and routed to your PCTV To Go device. For this reason it is important to correctly configure your PCTV To Go device to control your Cable or Satellite set top box. Use the PCTV Wizard to correctly configure and verify your video input device for use with the supplied PCTV To Go IR cable. For further information, please read the PCTV Wizard User's Guide. Once you have successfully configured your PCTV To Go for IR control, you must configure your MCE system to download the proper program guide. The following screenshot based instructions walk you through the steps to configure your MCE system for PCTV To Go IR control.

Before you start configuring the MCE:

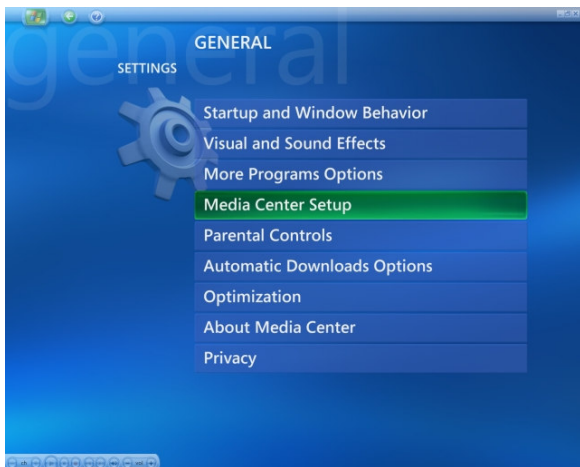
- ✓ Install the latest PCTV To Go software onto your MCE system. Make sure you reboot your system after the software installation is complete.
- ✓ Run the Setup Wizard and configure the IR Blaster for the Video Input which is connected to your PCTV To Go. **IMPORTANT: Make sure to leave the check box unchecked on the “Configure For Media Center” Setup Wizard screen.**
- ✓ Connect an MCE IR Blaster/Receiver (sometimes referred to as “Bean Bag” device) to the USB port of your MCE system. Make sure to also connect the IR cable of that device to its IR cable port. Note: there is not need to put the LED end of this cable to anywhere in particular



First launch your MCE application and  
**scroll to the Settings option.**



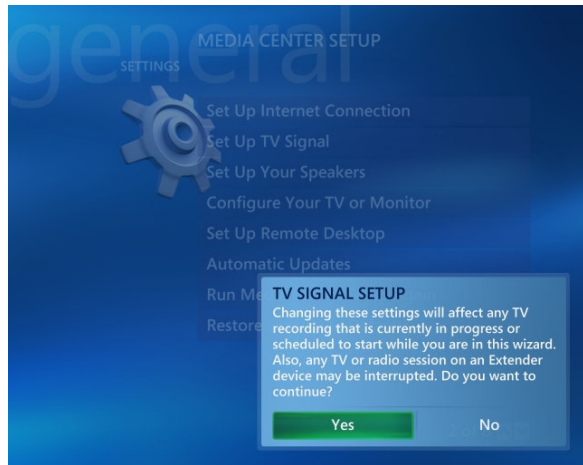
**Select the General option.**



In the General Options list, **select the Media Center Setup option.**



In the Media Center Setup Options list, **select the Set Up TV Signal option.**



**Select Yes** on the TV Signal Setup confirmation dialog box to continue.



**Select Next** on the TV Signal screen to continue.



**Confirm your region and select Next to continue.**



To configure MCE for use with PCTV To Go as its TV source, you need to configure the TV Signal manually. **Choose the “I will manually configure my TV signal” option and then select Next.**



**Select your proper TV Signal and select Next.** For this example, we will select Satellite.



The TV Signal “Prepare for Set-to Box Setup” screen shows you a list of action items to ensure that the MCE can control your hardware. This is not important for the PCTV To Go IR control because the PCTV To Go is configured to control the video hardware. However, you still want to go through these steps in MCE to ensure we get the proper GUIDE later in the procedure. **Select Next** to continue.



**Choose the video input where you connected your video source on PCTV To Go and select Next.** For this example, we are using the Composite Video input from the PCTV To Go device. The PCTV To Go is already correctly configured and the video source is on the Composite input of the PCTV To Go in our example.

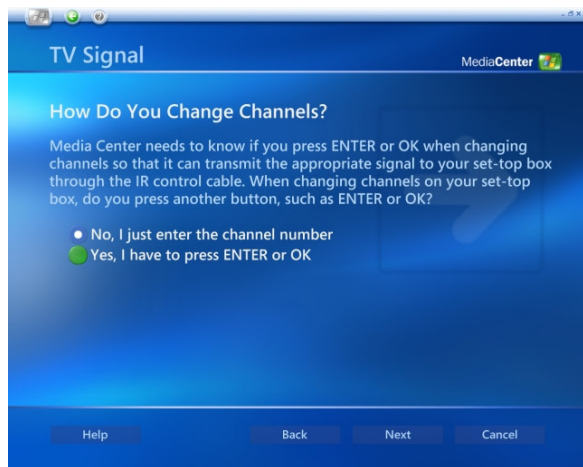


On the TV Signal “Set-top Box Remote” screen, **choose No and Next** to continue. Since the PCTV To Go will be controlling the IR codes which get sent to your video device, there is no need to configure this option through MCE.



On the TV Signal “Select Number of Digits” screen, select any number of digits. Again, it has no effect on the PCTV To Go IR control operation. **Select Next to continue.**





Similarly, on the TV Signal “How Do You Change Channels?” Screen, select any option and **select Next to continue.**



On the TV Signal “Select Your Set-top Box Brand” screen, **select the proper option and select Next to continue.** The selection on this screen is important in order to insure proper GUIDE data later in the procedure.

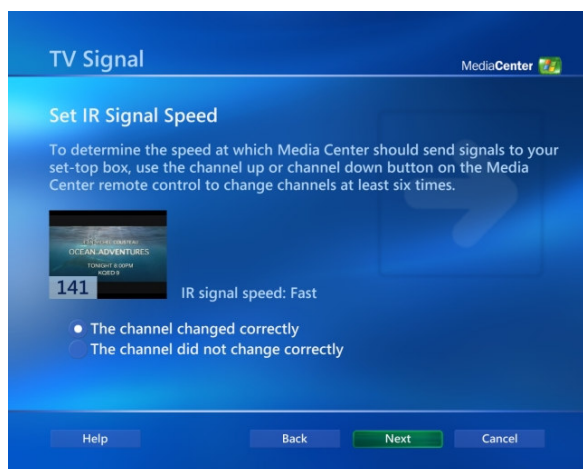


The TV Signal “Select Remote Control Code” screen provides you with a list of codes to choose. Since PCTV To Go is going to control the Cable or Satellite set top box through its own IR blaster and PCTV To Go has been configured already, the selection on this screen is not important. **Leave the default selection as is and select Next to continue.**



On the TV Signal “Test Channel Changing” screen, you will need to enter a channel number for the MCE setup to be able to continue, but what happens here does not influence the workings of PCTV To Go.

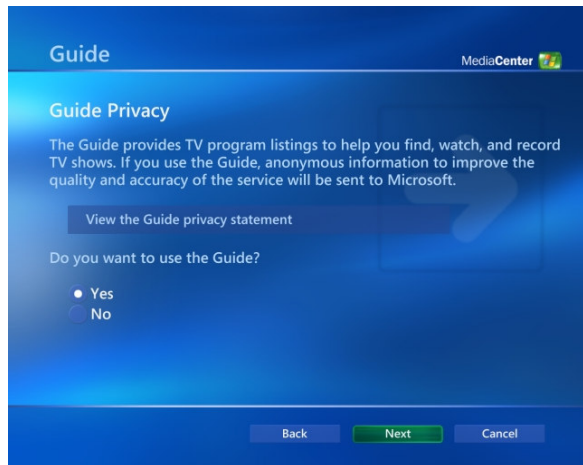
**Use the keyboard or remote to enter a number and then select the “The set-top box changed the channel correctly” option. Choose Next to continue.** . Again, the result of this operation is not important, so just select Next on the next screen to continue.



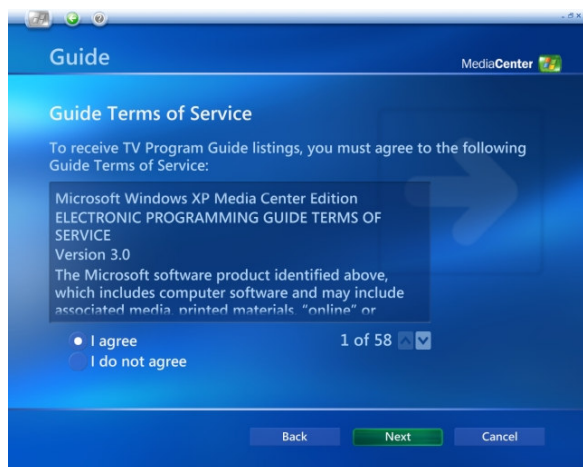
On the TV Signal “Set IR Signal Speed” screen, change the channel using the keyboard or remote, **select the “The channel changed correctly” option and choose Next to continue.** Again, the result of this operation is not important, so just select Next on the next screen to continue.



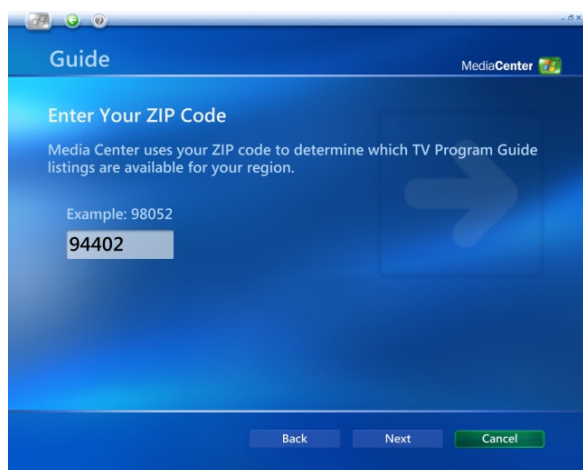
**Select Next** on the Guide “Set Up Your TV Program Guide” screen to begin the Guide setup.



Read and agree to the Guide Privacy statement and **select Yes and Next to continue.**

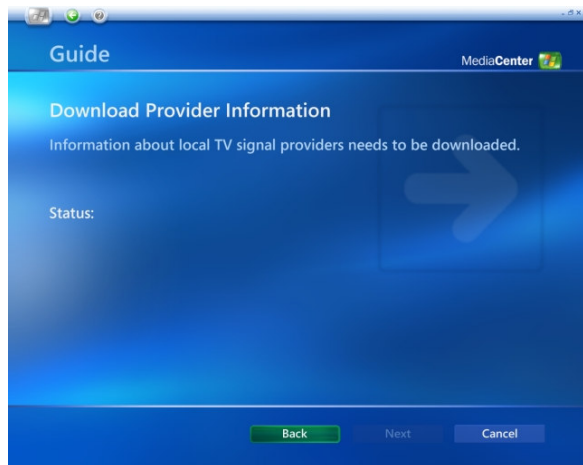


**Agree** to the Guide Terms of Service **and select Next to continue.**

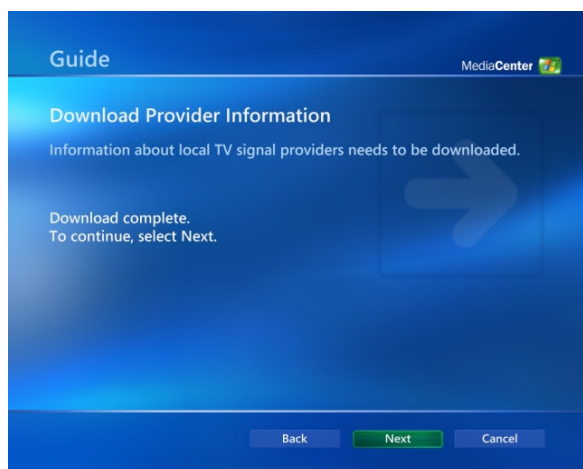


**Enter your proper ZIP code** in the Guide "Enter Your ZIP Code" screen. This is important in order to download the proper Guide from the web. **Select Next to continue.**





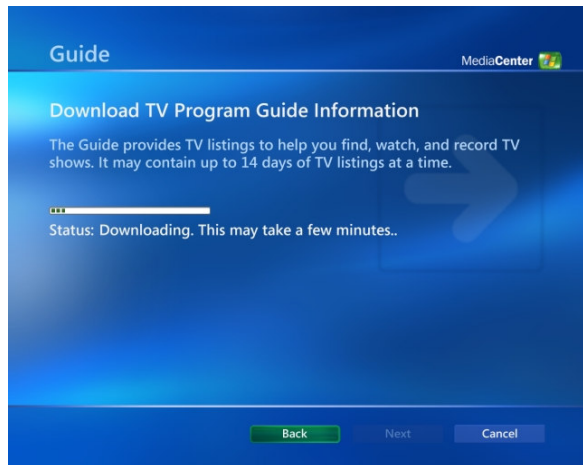
MCE proceeds with downloading the provider information for your area.



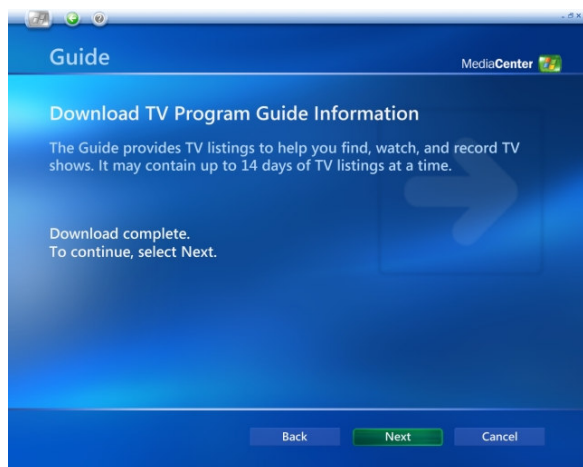
When all your provider information is downloaded, the screen information will change to "Download complete."  
**Select Next to continue.**



**Select your proper provider and select Next to continue.** For this example we are using San Francisco, DISH.

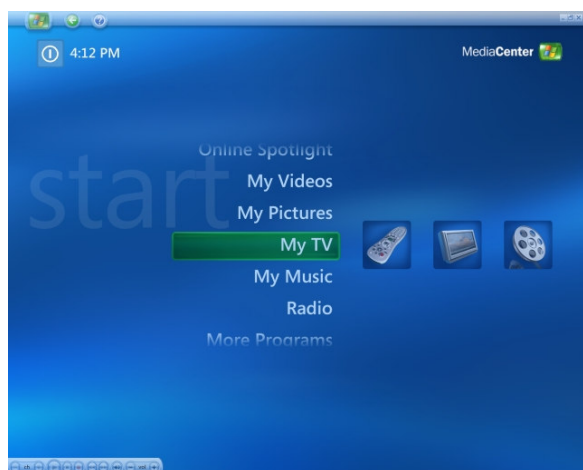


MCE proceeds with downloading the TV program guide information for your provider.



When all your program guide information is downloaded, the screen information will change to “Download complete.”

**Select Next to continue.**



Now **go to the Main Menu of MCE** and highlight “My TV”

In order to navigate back to previous menu levels of MCE, use the back arrow in the title bar of MCE, or press the [Backspace] key on your keyboard.



Now go to the Live TV module of MCE's My TV. **Highlight “Live TV” and press Enter, or click on “Live TV”.** “Live TV” is represented by a TV screen.



You will see your PCTV To Go signal playing in the MCE UI. You can now change channels in the MCE UI and your requests will be routed to the PCTV To Go device.

#### **QUICK MCE GET STARTED HELP:**

- To change channels in MCE, click on the + or – signs in the MCE onscreen controller that pops up in the bottom left of the MCE window when you move your mouse,  
  
or enter your desired channel with the numeric keypad and press Enter,  
  
or use the MCE remote controller pointed at your MCE IR Emitter/Receiver if you have one.
- The timeshifting and recording functions of MCE also work perfectly with PCTV To Go, and so does MCE's EPG programming functionality.
- Refer to the MCE help guide for more information on how to use all the advanced capabilities of this powerful application. You will find the MCE Help Guide under the Settings / Help / Help menu path off the main menu of MCE.
- If your channels do not change, please check that PCTV To Go is correctly configured and you are able to control the channels of your set-top box using the PCTV Wizard.